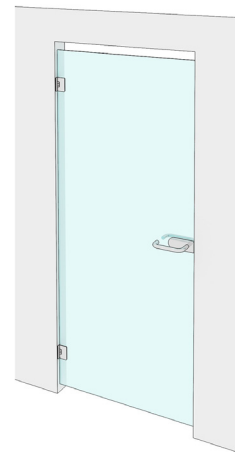


Montagehandleiding hardglazen deur Stijn

Gefeliciteerd met de aanschaf van dit GLAZZ® product! Wij hebben uiterste zorg besteed aan de productie en verpakking van uw bestelling. Wij adviseren om zorgvuldig de aanwijzingen in deze montagehandleiding te volgen, zodat u jarenlang plezier zult hebben van dit kwaliteitsproduct.

Heeft u nog vragen? Neem dan contact op met onze helpdesk: info@glazz.nl of **bel 0517-380911** op maandag t/m vrijdag van 8:00 – 17:00.



BELANGRIJK!!



Montage met
2 personen



Breekbaar



Niet snijden
in verpakking



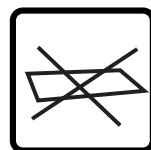
Niet op hoek
plaatsen



Voldoende
ondersteunen

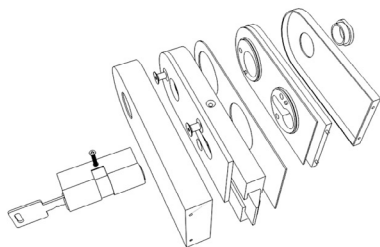


Niet horizontaal maar
verticaal verplaatsen

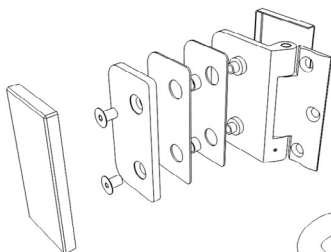


WAT KRIJG IK?

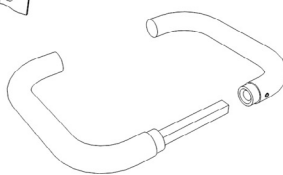
1x Slot



2x Scharnier



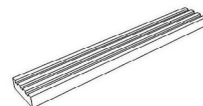
1x Deurkruk



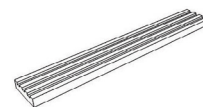
1x Geharde ruit



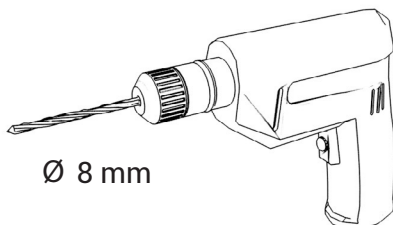
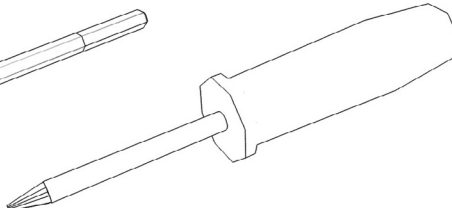
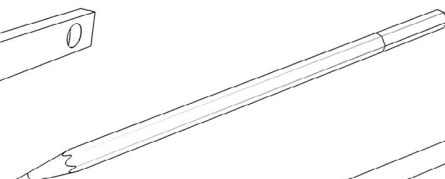
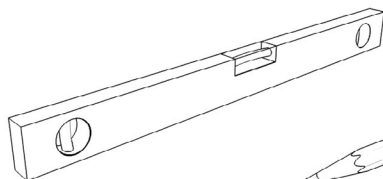
2x Afstandhouder
groen 5/15mm



2x Afstandhouder
rood 3/15mm

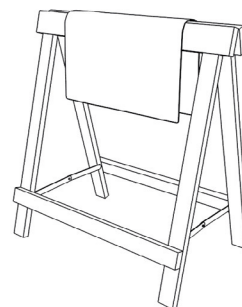


WAT HEB IK NODIG?



Ø 8 mm

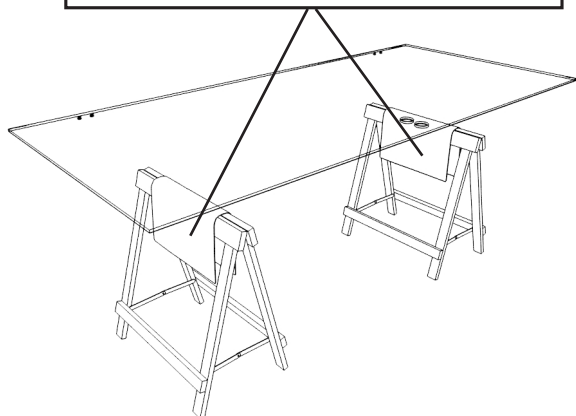
2x



1

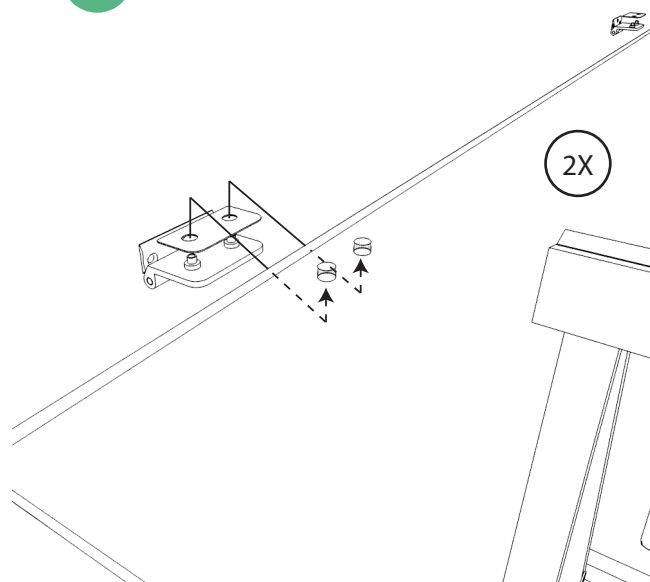
LET OP!

Bedek het hele oplegvlak met zacht materiaal om krassen te voorkomen.

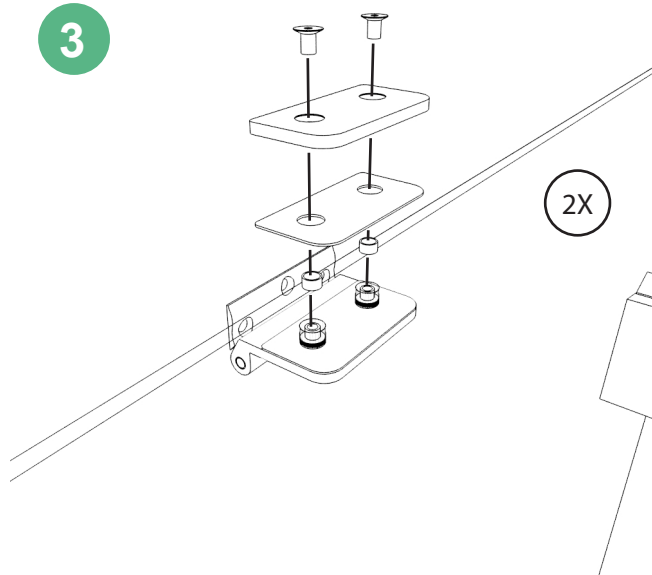


Zichtkant (buitenkant deur) naar beneden!

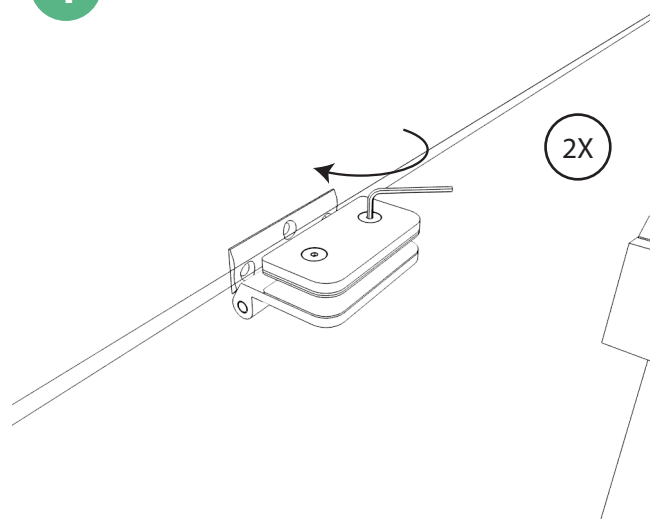
2



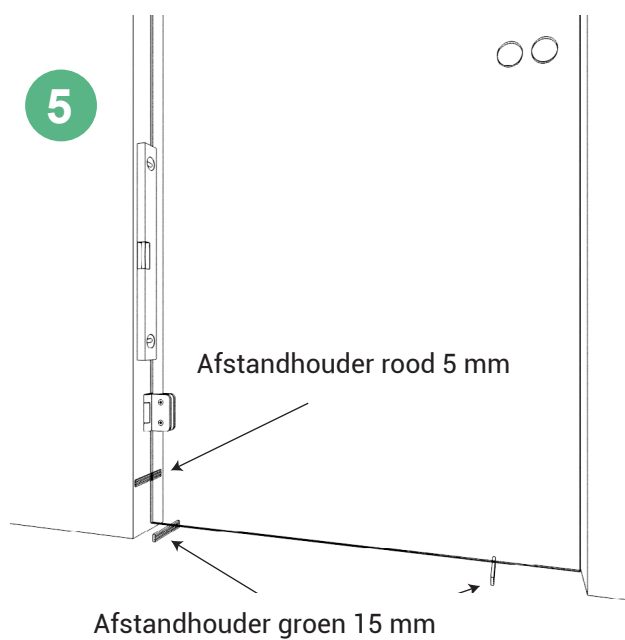
3



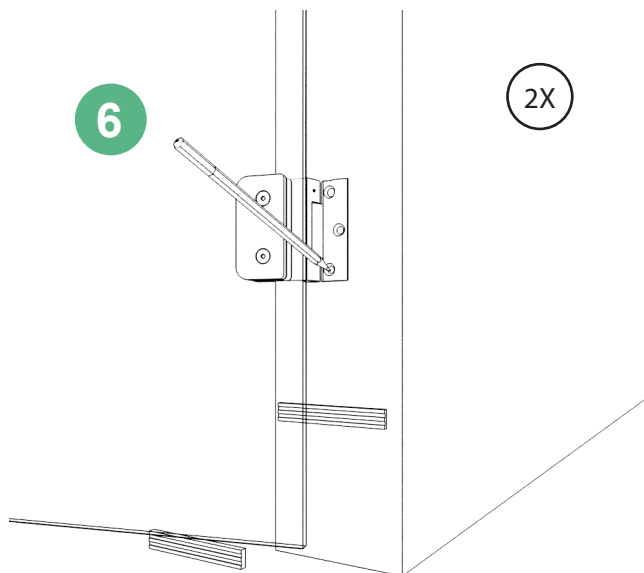
4

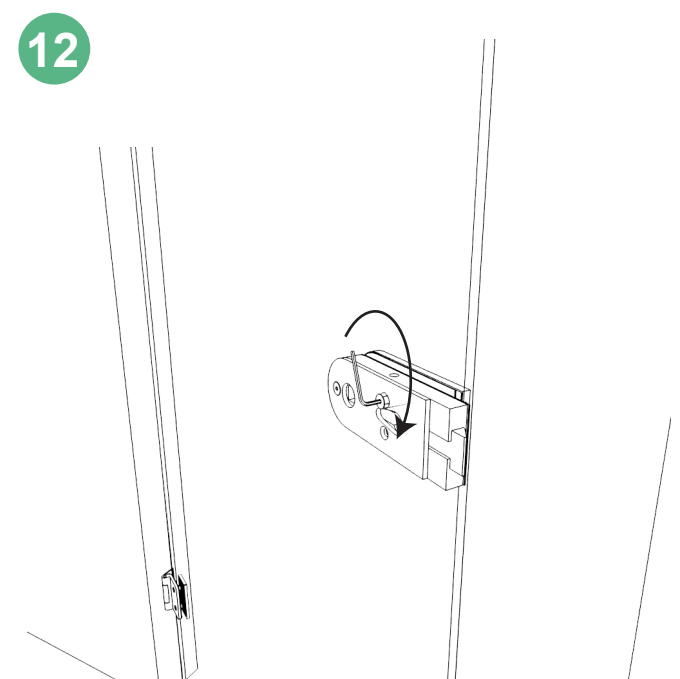
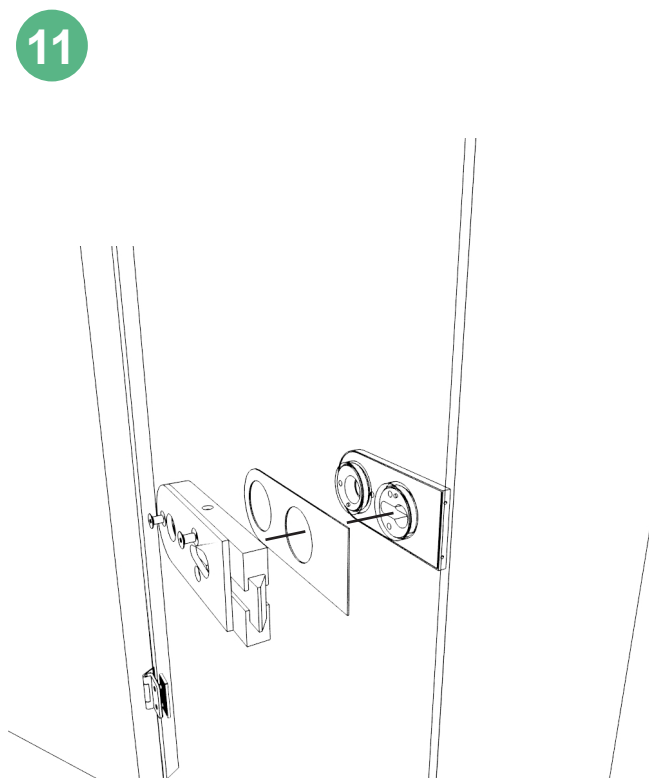
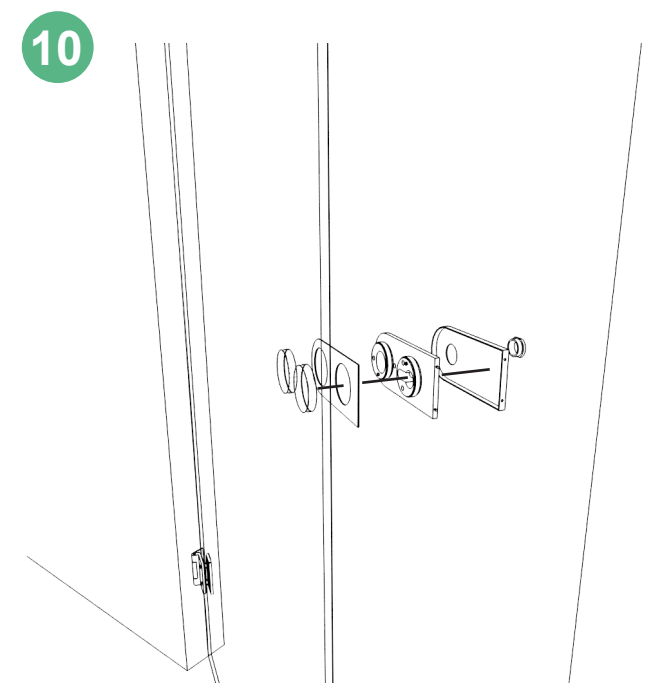
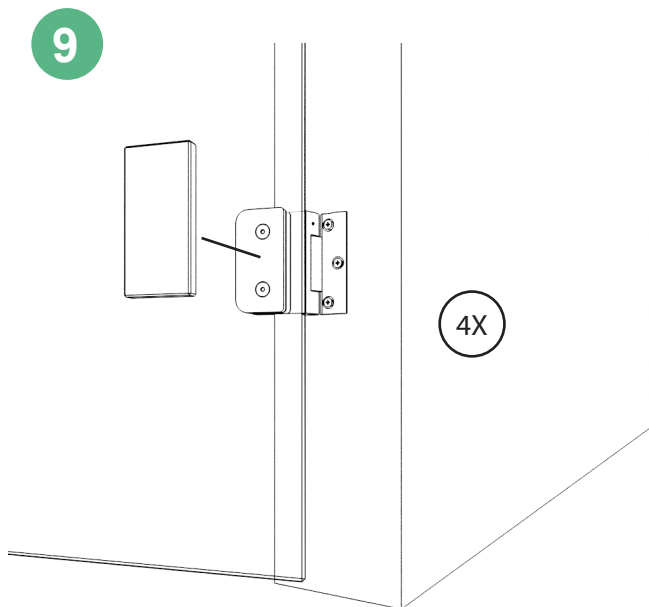
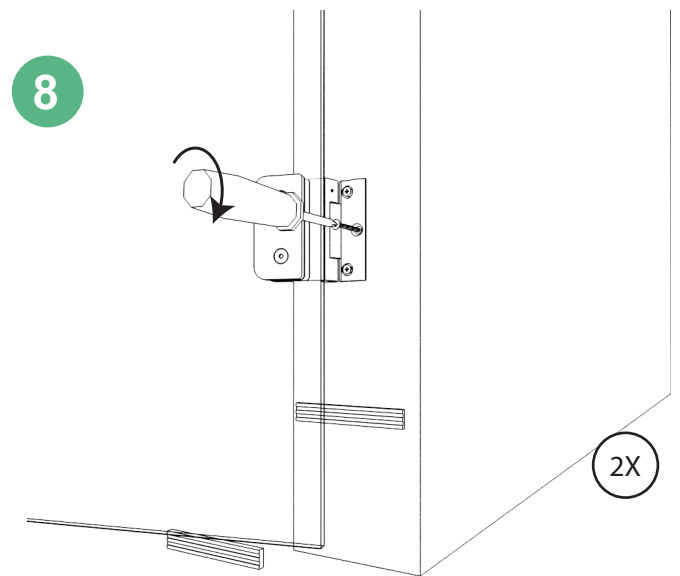
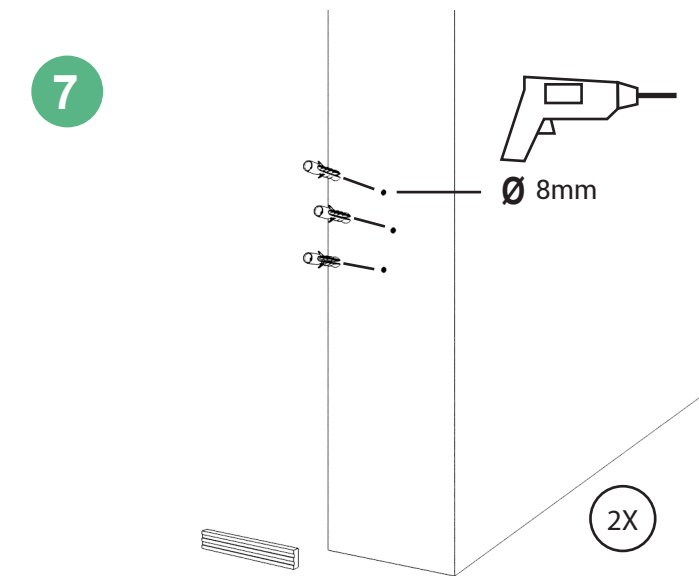


5

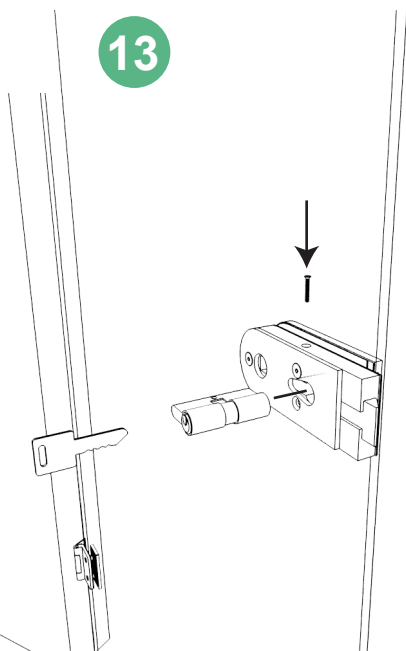


6

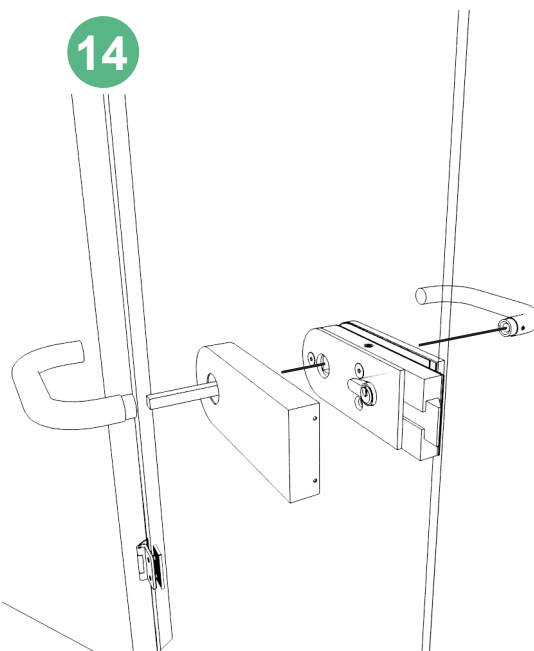




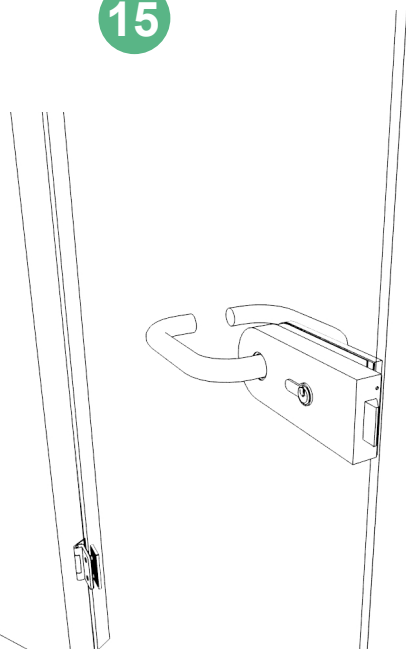
13



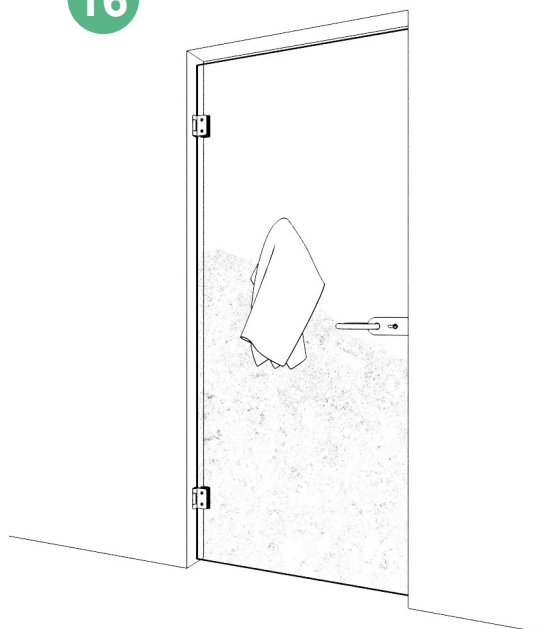
14



15



16



Schoonmaken met GLAZZcleaner en
behandelen met GLAZZprotector.