

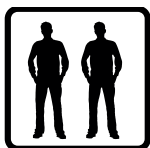


Montagehandleiding douchewand Roos

Gefeliciteerd met de aanschaf van dit GLAZZ® product! Wij hebben uiterste zorg besteed aan de productie en verpakking van uw bestelling. Wij adviseren om zorgvuldig de aanwijzingen in deze montagehandleiding te volgen, zodat u jarenlang plezier zult hebben van dit kwaliteitsproduct.

Heeft u nog vragen? Neem dan contact op met onze helpdesk: info@glazz.nl of **bel 0517-380911** op maandag t/m vrijdag van 8:00 – 17:00.

BELANGRIJK!!



Montage met
2 personen



Breekbaar



Niet snijden
in verpakking



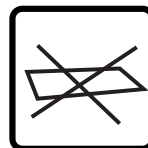
Niet op hoek
plaatsen



Voldoende
ondersteunen

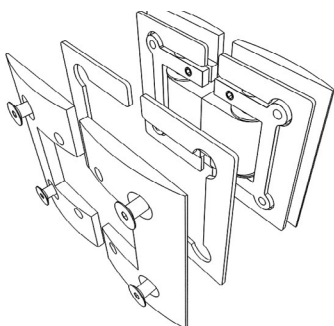


Niet horizontaal maar
verticaal verplaatsen

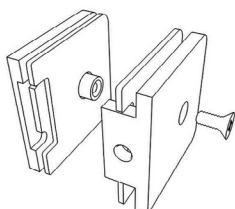


WAT KRIJG IK?

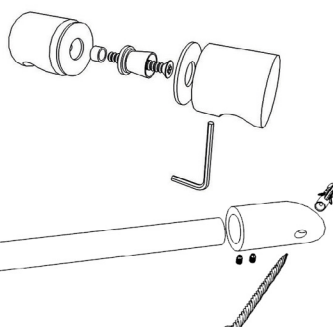
2x Scharnier



2x Wandklem

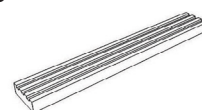


1x Greep (optie)

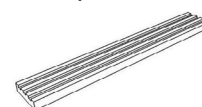


1x Stabilisatorstang

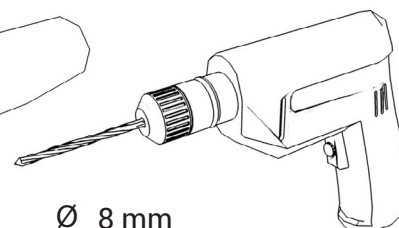
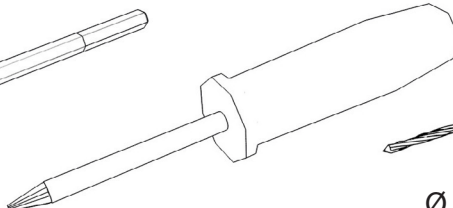
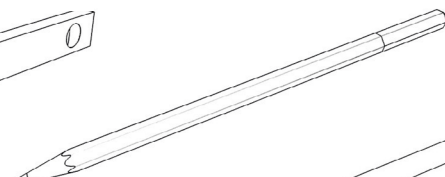
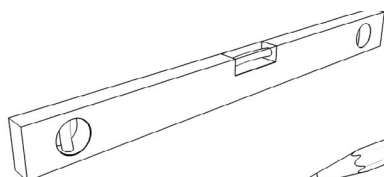
4x Afstandhouder
groen 5/15 mm



2x Afstandhouder
rood 3/15 mm

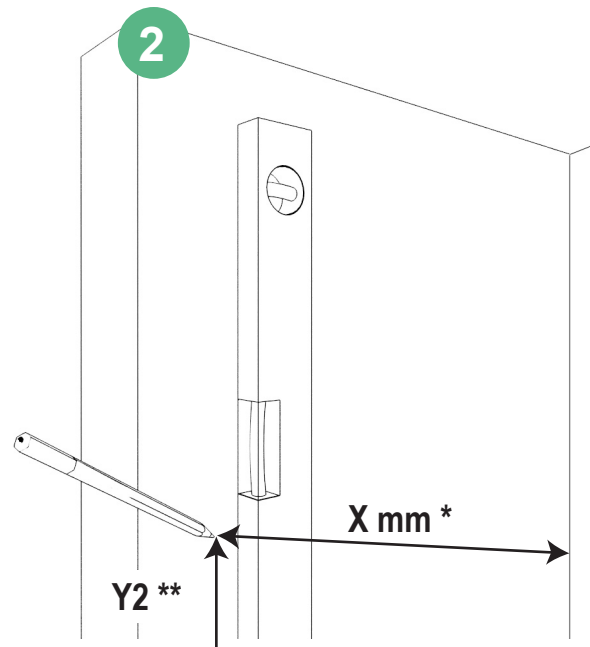
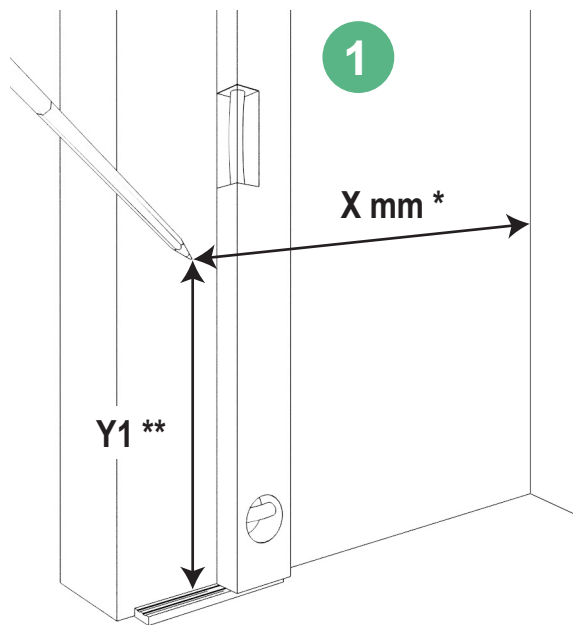


WAT HEB IK NODIG?



Ø 8 mm

Ø 6 mm

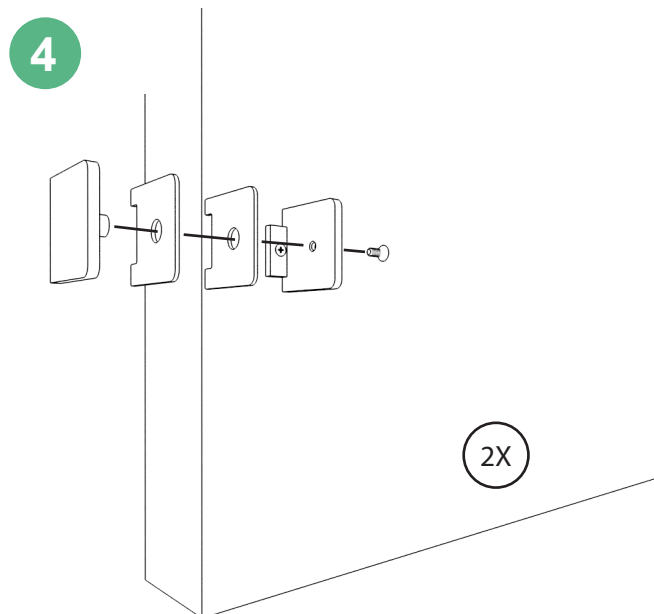
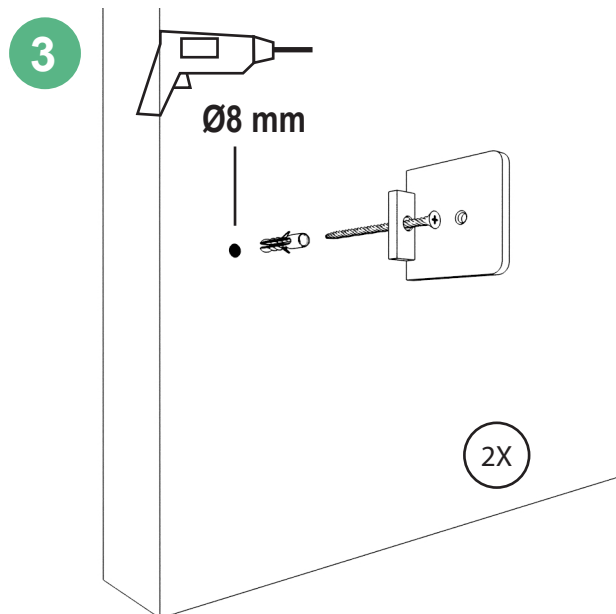


Hoogte meten vanaf afstandhouder (groen 5 mm).

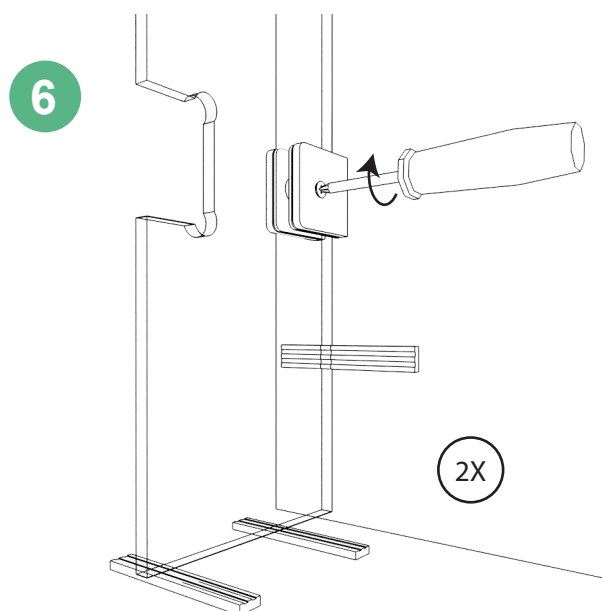
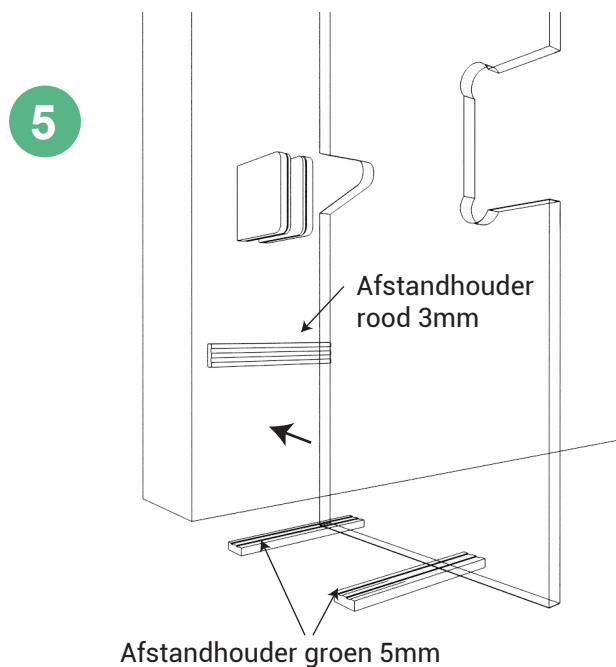
* X = Gewenste afstand van de muur tot de binnenkant van de glazen wand + 4 mm.

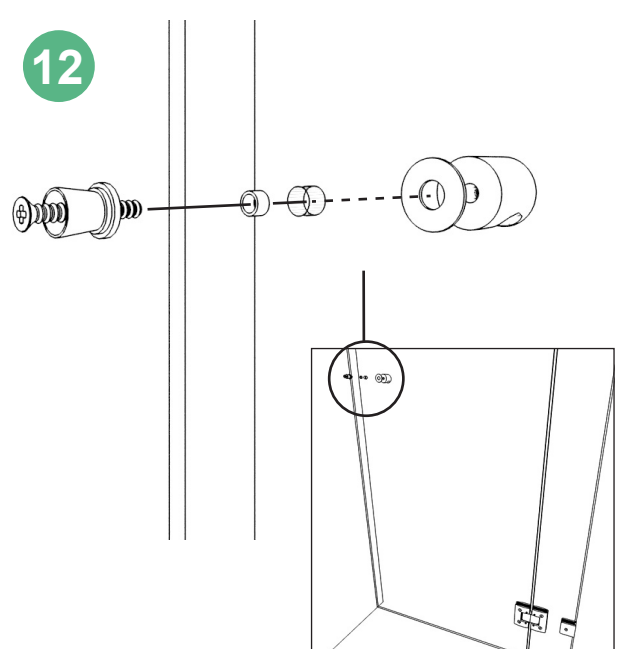
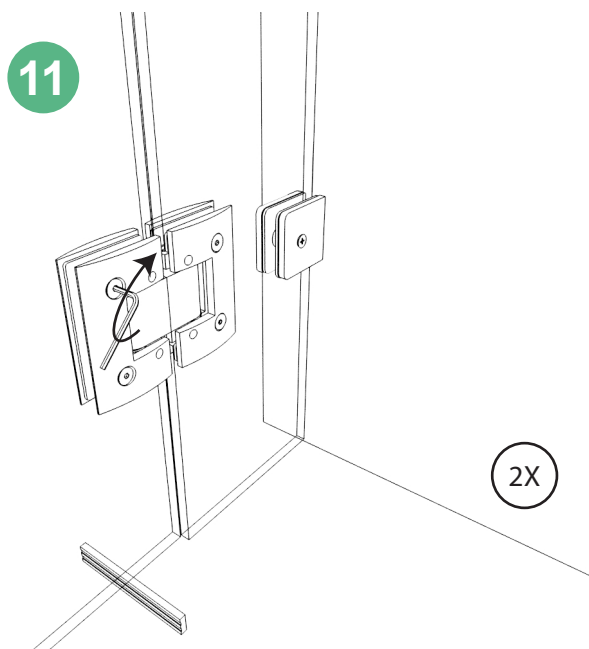
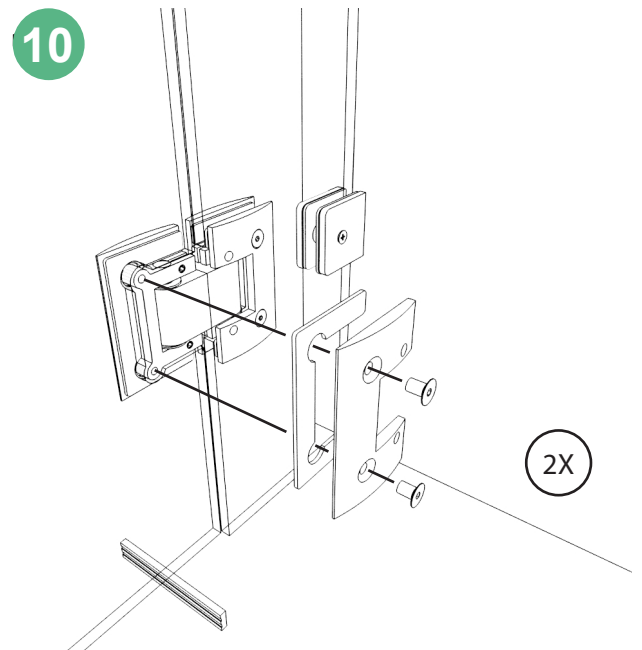
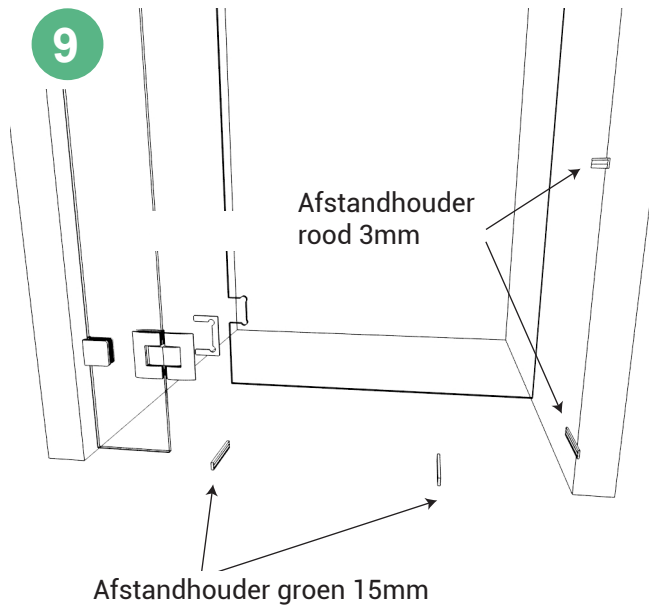
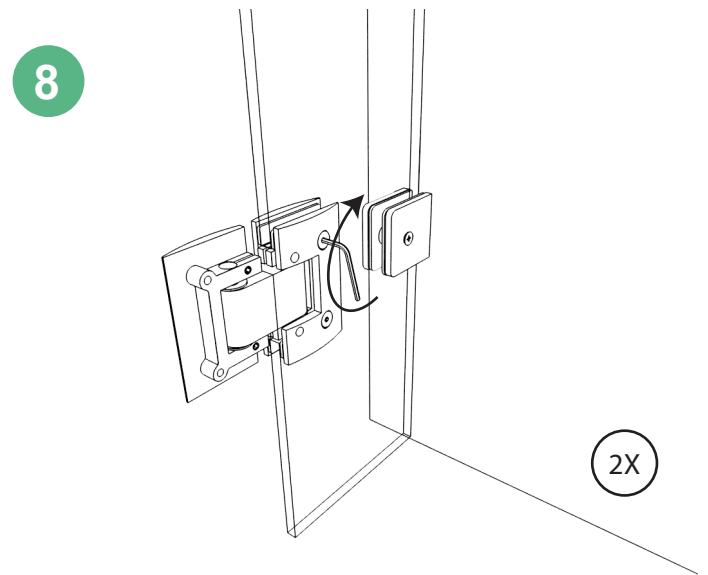
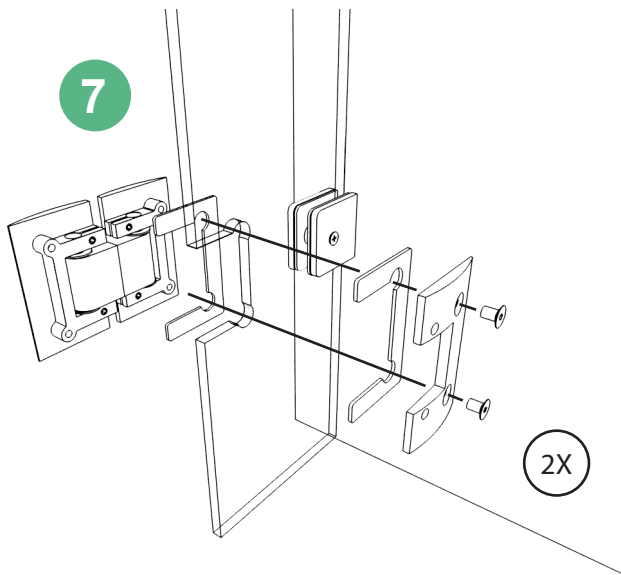
** Y1 = Hart van de onderste sparing in geharde ruit tot onderkant glas.

** Y2 = + hart op hart afstand tussen bovenste en onderste sparing in de geharde ruit.

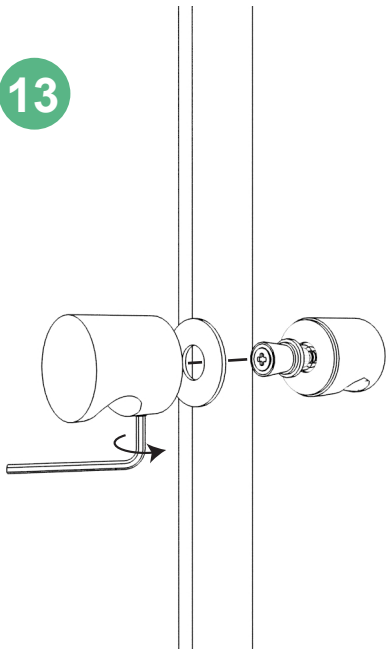


Nog niet helemaal aandraaien.



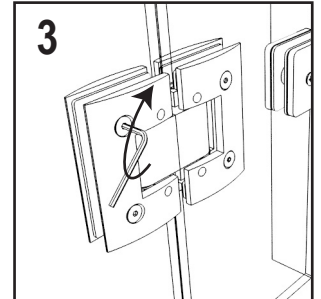
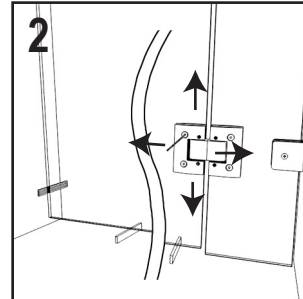
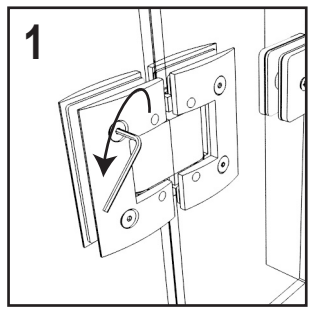


13



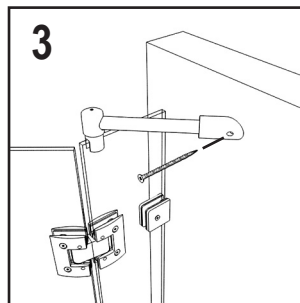
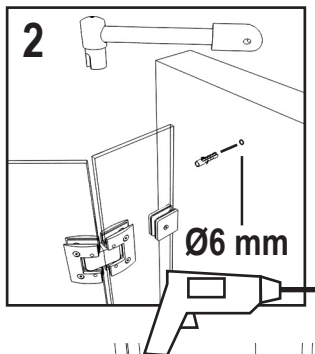
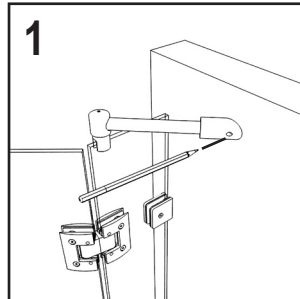
14

Uitlijnen van de deur door:
1) schroeven in scharnieren licht draaien
2) positioneren met afstandhouders
3) schroeven stevig aandraaien

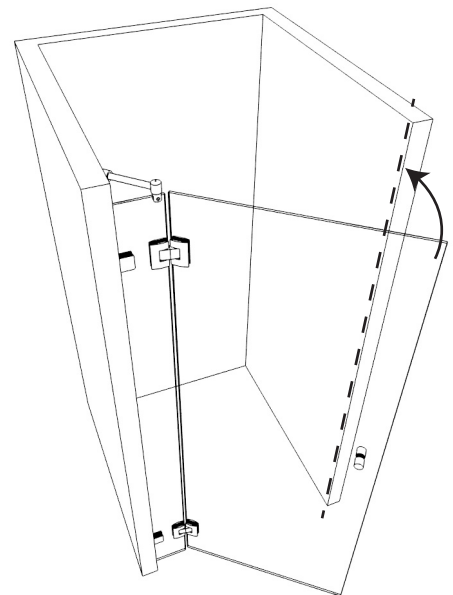


15

Stabilisatorstang plaatsen:
1) stang assembleren en aftekenen
2) boren en plug plaatsen
3) stang plaatsen en bevestigen

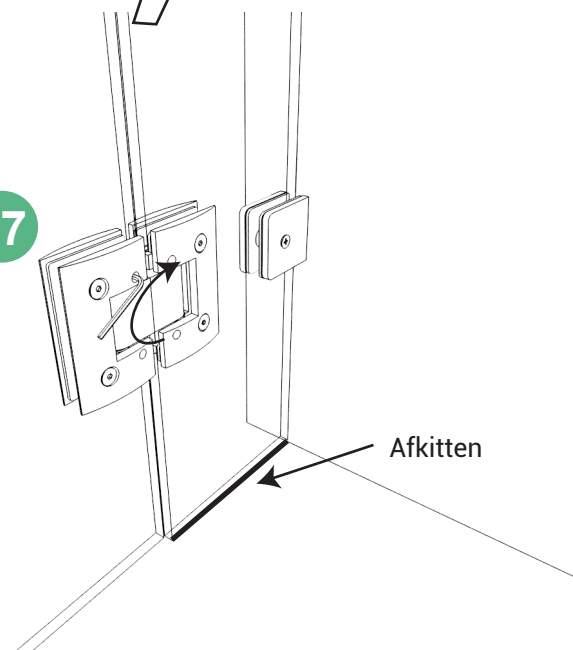


16



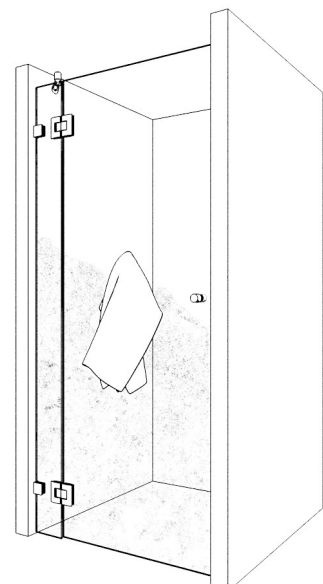
Plaats de deur in gesloten positie.

17



en draai beide inbusschroeven in
het scharnier vast.

18



Schoonmaken met GLAZZcleaner
en behandelen met GLAZZprotector.